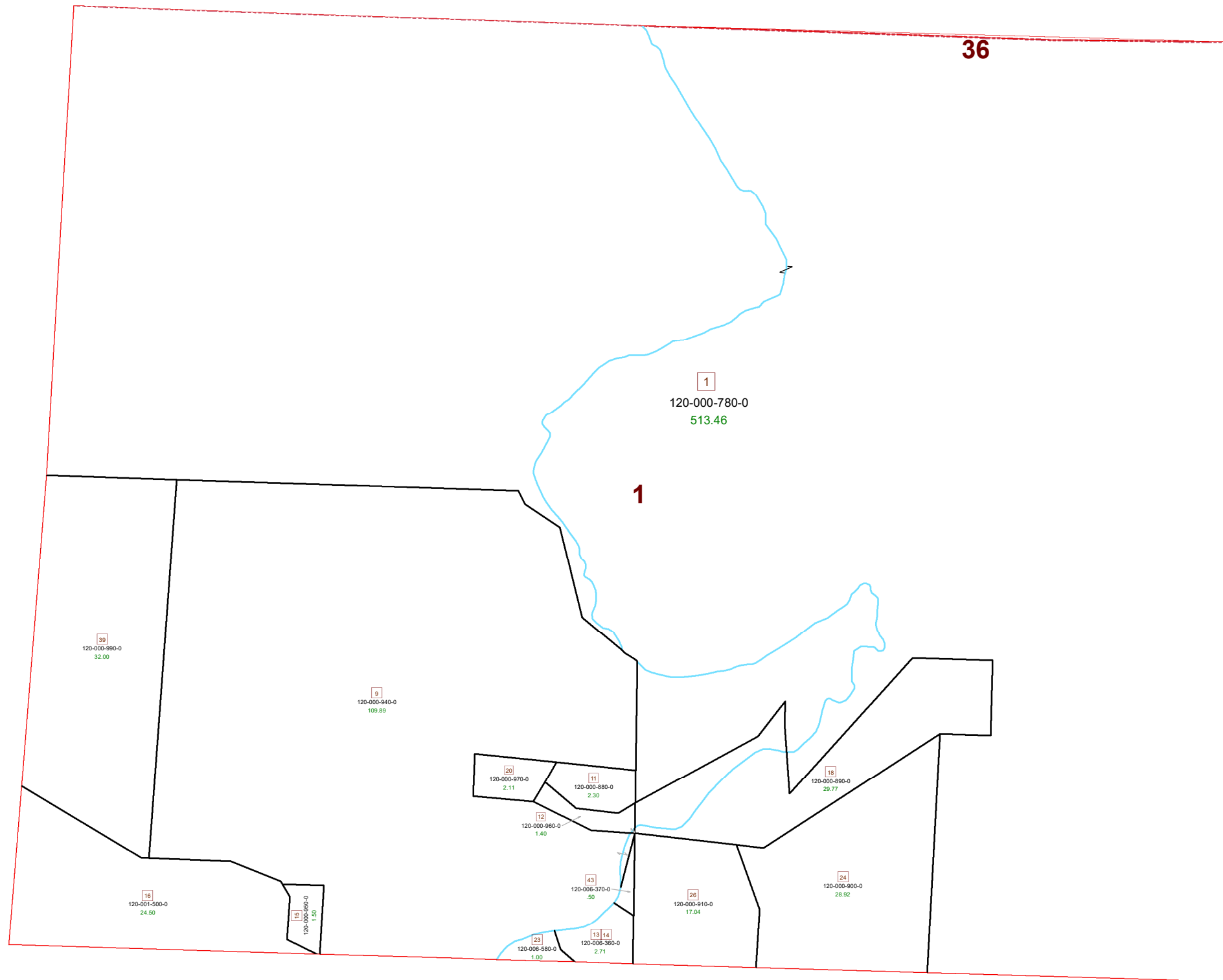
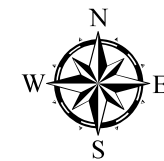


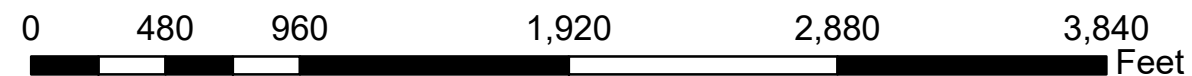
MEIGSVILLE TOWNSHIP SECTION 01 R11 TWP 10 MORGAN COUNTY, OHIO



PIN	VOL	PAG	Owner	LegalDescr	Acres
120-000-950-0	OR230	1	CNX LAND LLC	R11 T10 S01 SD 15 C	1.5
120-000-910-0	OR230	1	CNX LAND LLC	R11 T10 S01 SD 26 G	17.04
120-001-500-0	OR230	1	CNX LAND LLC	R11 T10 S01 SD 16 G	24.5
120-000-960-0	OR230	1	CNX LAND LLC	R11 T10 S01 SD 12 C	1.4
120-000-880-0	OR230	1	CNX LAND LLC	R11 T10 S01 SD 11 G	2.3
120-000-970-0	OR230	1	CNX LAND LLC	R11 T10 S01 SD 20 C	2.11
120-000-900-0	OR230	1	CNX LAND LLC	R11 T10 S01 SD 24 G	28.92
120-000-890-0	OR230	1	CNX LAND LLC	R11 T10 S01 SD 18 G	29.77
120-006-580-0	OR230	1	CNX LAND LLC	R11 T10 S01 MME5B S	1
120-000-990-0	OR230	1	CNX LAND LLC	R11 T10 S01 SD 39 L	32
120-006-360-0	OR230	1	CNX LAND LLC	R11 T10 S01 SD 14-13	2.71
120-000-940-0	OR230	1	CNX LAND LLC	R11 T10 S01 SD 9 C S	109.89
120-000-780-0	OR234	3664	OHIO FRANKLIN REALTY LLC	R11 T10 S01 SD 1	513.46
120-006-370-0	OR136	100	OHIO POWER COMPANY ATTN: TAX DEPT	R11 T10 S01 SD 43 G	0.5



Boundaries	
	Hydro
	Section
	Roads
	Lot
	Township
	County
	Parcel
	ROW



Disclaimer: The information that these maps contains is for reference purposes only. Please bring any erros to the attention of the Engineer's Office staff. Thank you